

CAPRARI S.p.A.

NOTE No. 15b/16

from MKT to EXPORT SUBSIDIARIES

Subject: E8PX ENDURANCE SERIES

Caprari offers the new **E8PX Endurance** range in **AISI 316** replacing the current E8SX Endurance series. The new E8PX Endurance series, created from the experience gained with the E8P Energy range and with the Endurance series, ensures high quality standards and hydraulic performance among the best on the market. Made up of precision casting AISI 316 stainless steel, the new E8PX Endurance ensures maximum operation reliability also in extremely harsh environments such as sea water.

Very thick components, the choice of increasingly high performing materials and the innovative hydraulic design make the E8PX pumps unique on the market for their robustness, reliability, performance and flexibility of use.

The AISI 316 wet ends are coupled to 6 and 8 inch Caprari submersible motors.

RANGE

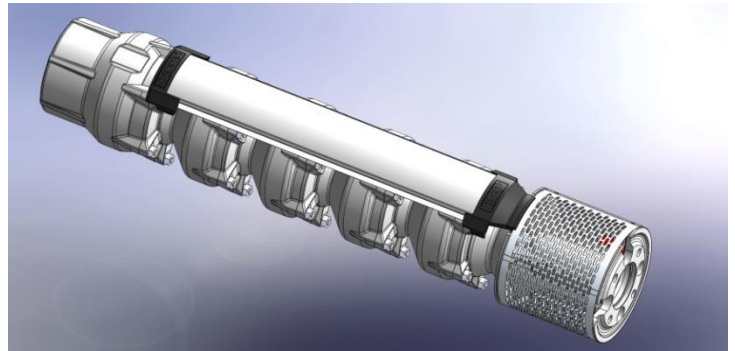
OLD MODEL		NEW MODEL
E8SX50	→	E8PX65
E8SX55	→	E8PX65
E8SX57	→	E8PX95
E8SX60	→	E8PX135

See annex A for model list.

CODING

E8PX**65**/4A+MACW630A-8V
E8PX65-6/4A-W
MACW630/2A-8

65 corresponds to the Q value given in [m³/h] at b.e.p.



STRONG POINTS OF THE PROJECT

- Top level efficiency ratings: the best available on the market to current date. The efficiency curves are even wider and "flatter", thus ensuring high efficiency on the whole operation field
- The higher head per stage guarantees pump selection advantages compared to the E8SX series and to most competitors: a shorter, more compact, robust and cheaper pump
- Very thick components and the smooth surface of hydraulic profiles (typical of casting technology) ensure robustness, duration and great reliability. It is also possible to create performance curves centred on the duty point with specific impeller trimmings, which cannot be easily created on stamped and welded steel pumps
- All components are in AISI 316 stainless steel. This ensures a further improvement in terms of resistance to corrosion (40,000 p.p.m. compared to 35,000 p.p.m. of the E8SX series)
- Shaft and joint are made of duplex to guarantee maximum reliability also in highly harsh environments
- Suitable for applications with solids contents up to 150 g/m³
 - bearings protected against the entrance of sand with non-return sealing lip
 - motor-joint coupling area protected against the entrance of solids to ensure maximum joint and motor seal reliability. All 8" Caprari motors are equipped with Protector device.
- DEFENDER® (Caprari International Patent): speeds up component passivation by protecting the pump from the very first moments after installation
- By eliminating feather key seat on the shaft end, the component resistance will increase: transmission through splines
- Fastening of diffusers is ensured by means of duly sized and fewer stud bolts to make disassembly and maintenance easier

CAPRARI S.p.A.

- Cable guard separated terminals in high performance technopolymer featuring the Caprari logo on the upper terminal and model name in the lower one. Possibility of cutting to size in case of replacement or repair operations.
- Range rationalisation. With three families of pumps we cover the same Q-H field that we used to cover before with four families. Warehouse stock reduction
- E8PX wet ends can be coupled to MAC, MACX or MACW series motors

STANDARDS

The machines are certified for use with drinkable water, in accordance with laws DM174, WRAS and KTW-W270.

Performance curves of Endurance line comply with standard ISO 9906 grade 2B on the whole curve. Upon request, the tests can be carried out within the limits established by the same standard according to grade 1B. In case of coupling with 6 inch HT motors, the performance curves comply with standard ISO 9906 grade 3B on the whole curve

Electric pumps and the single wet ends can always have the non-preferential origin certificate "Made in". To obtain the EUR 1 preferential origin certificate, you need to check the sales net price of the wet end or of the electric pump unit.

OPTIONS AND ACCESSORIES

Three connection pipe kits flange are available, threaded at valve side and flanged at riser pipe side, counterflange and gasket: one with flange UNI/DIN, one with reduced flange and one with ANSI flanging. All the connection pipe kits are in AISI316.

Upon request, the NPT threading can be provided directly on the valve (G5" threaded valve on all sizes as standard).

The Endurance 8" submersed electric pump unit is supplied as standard in full AISI 316. This product configuration will be provided also in case of request for AISI 304 machine, unless in case of significant sales quantities for which the AISI 304 solution will be considered (delivery times upon request).

The E8PX series (pumps and motors) is also available in duplex/super duplex version. Prices and delivery times upon request.

Counterflange kits currently used on the E8SX series have been eliminated.

PACKAGES

Package: in a wooden case

SPARE PARTS

SparesTutor has been updated with the exploded drawings of the new pumps.

E8PX Endurance pump spare parts are not interchangeable with those of the previous E8SX range.

DISTRIBUTION CHANNELS AND POLICIES

- Caprari SpA: stock of components at the warehouse in Modena
- Delivery times: 2 weeks from order date for the AISI 316 version

PROMOTIONAL, MARKETING AND AFTER-SALES POLICIES

- Leaflet) available on caprari.com in both language versions
- B/W catalogue) available on caprari.com in both language versions. 60Hz version available. Units with MACX motor coupling (waiting for stock depletion)
- Specifications) available on iPump/PumpLiterature
- PTNG) series available with MACX motor coupling (until stocks are exhausted)

PRICES

See annex A list.

Prices of E8PX Endurance wet ends are in general aligned with or lower than the corresponding E8SX with equal Q/H performance; we underline that the configuration of E8PX Endurance series is in AISI 316 with shaft and joint in duplex.

CAPRARI S.p.A.

AVAILABILITY

Product available for sales unless E8SX and MACX8 stocks are exhausted.

Marco Siligardi