

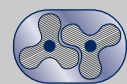
**BIOGAS**  
*application*  
**Blower packages**



**ROBUSCHI®**  
**ROBOX**  
*evolution*

**CRBIO**

**GRBIO**



**ROBUSCHI®**

PUMPS • BLOWERS & COMPRESSORS

## BLOWER PACKAGES - biogas application

Robuschi is pleased to introduce the new solutions for BIOGAS applications, especially developed, for the **conveying and compression of biogas, as well as natural and landfill gases in waste water treatment and power generation plants.**

The Blower Biogas Packages have been certified, according to the most important and recent **EC guideline 94/9/EC (ATEX) - group II in category 2**, in order to guarantee the best safety usage in this range of application.

### ROBOX evolution BIOGAS

Blower package units, with capacity **up to 2850 m<sup>3</sup>/h** and differential pressure **up to 1000 mbar.**

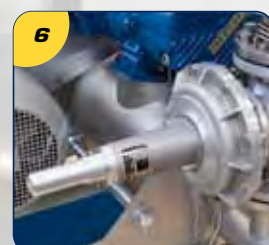
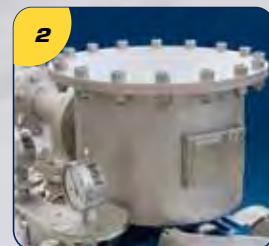
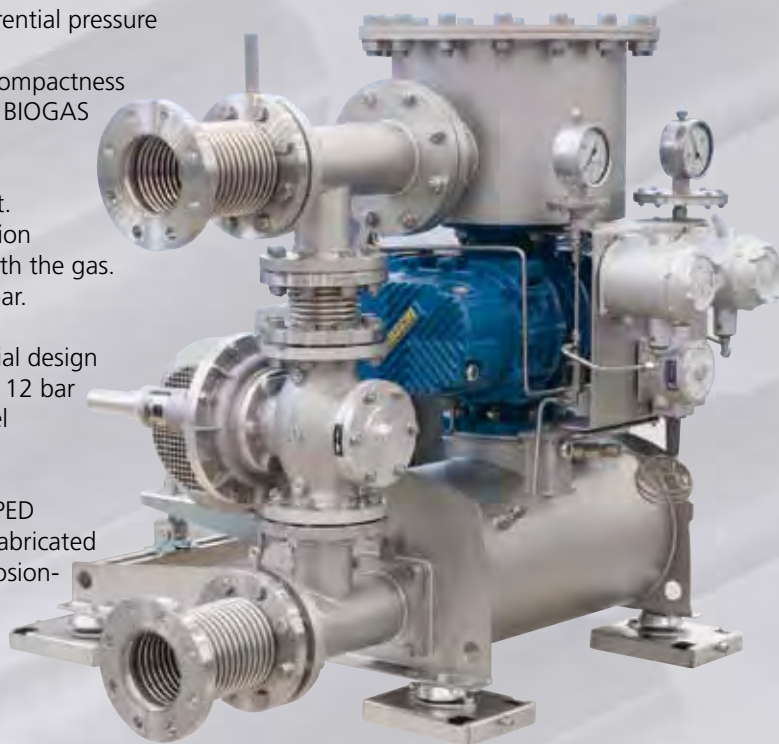
The innovative characteristics of the ROBOX evolution: silence, compactness and easy maintenance, remain the hallmarks of this new blower BIOGAS group.

- 1 • RBS blower stage:** with gastight sealing of the driving shaft. It is available, optionally, the blower with a special anticorrosion coating protecting all the blower's components in contact with the gas. The blower is explosion-proof tested and certified up to 12 bar.
- 2 • Suction silencer:** 1.3 bar overpressure PED certificated special design silencer, fabricated in hot galvanized steel with drainage and 12 bar explosion-proof tested. It is also available in the stainless steel version as optional.
- 3 • Baseframe with discharge silencer:** 1.3 bar overpressure PED certificated baseplate and special design discharge silencer, fabricated in hot galvanized steel with drainage device and 12 bar explosion-proof tested. It is also available in the stainless steel version as optional.
- 4 • Spark safe belt guard in ATEX version.**
- 5 • Instruments panel:**
  - **Inlet and outlet pressure gauge indicators:** diaphragm manometer complete of stainless steel accessories (tap and pipes) in ATEX version.
  - **Temperature protection switch in ATEX version**
  - **Pressure protection switches (optional)**
- 6 • Pressure regulator with bypass** for keeping outlet pressure constant (optional). The standard version is equipped with a safety relief valve and a non return WR valve in ATEX version.

**Axial compensators** in suction and discharge side in stainless steel.

- The following components are available in addition to the standard version:
  - *Sound enclosure*
  - *Stainless steel gas humidity drainage system with tank*

**Other special designs are available upon request.**



### PERFORMANCES

	ROBOX evolution BIOGAS 1	ROBOX evolution BIOGAS 2	ROBOX evolution BIOGAS 3
<b>RBS RANGE</b>	15-25-35	35-45-46-55-65	65-66-75-85-86
<b>Pressure min/max (mbar)</b>	1 / 1000	1 / 1000	1 / 1000
<b>Capacity min/max (m<sup>3</sup>/h)</b>	240 / 400	400 / 1080	1370 / 2850



## CRBIO - GRBIO

Blower package groups, assembled on a skid, with capacity **up to 3280 m<sup>3</sup>/h** and differential pressure **up to 400 mbar**.

It is available with pulley - belt transmission (GRBIO) and directly coupled (CRBIO).

- 7 • **RBS blower stage:** with the same features of the ROBOX evolution version.
  - 8 • **Steel base** with anti-vibration mounts
  - 9 • **Non return valve**
  - 10 • **Galvanized and / or painted piping**
  - 11 • **By-pass safety relief valve**
  - 12 • **Coupling guards in ATEX version**
- The following components are available in addition to the standard version:
    - Pressure regulator with bypass for keeping outlet pressure constant
    - Inlet and outlet pressure gauge indicators in ATEX version
    - Temperature protection switch in ATEX version

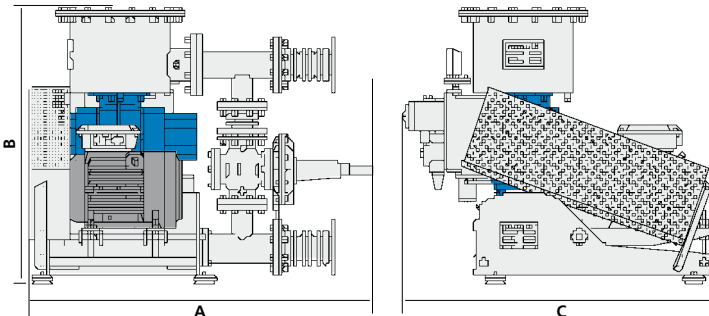


### PERFORMANCES

	CRBIO/GRBIO 1	CRBIO/GRBIO 2	CRBIO/GRBIO 3
<b>RBS RANGE</b>	15-25	35-45-46-55-65	75-85-86
<b>Pressure min/max (mbar)</b>	1 / 400	1 / 400	1 / 400
<b>Capacity min/max (m<sup>3</sup>/h)</b>	40 / 350	100 / 2040	570 / 3280

### DIMENSIONS AND WEIGHT

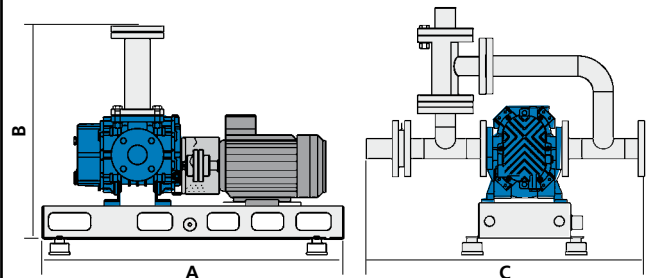
#### ROBOX evolution BIOGAS



EL	15/1	25/1	35/1	35/2	45/2	46/2	55/2	65/2	65/3	66/3	75/3	85/3	86/3
<b>A</b>	844	862	862	1161	1161	1211	1196	1235	1630	1630	1630	1630	1670
<b>B</b>	745	745	745	1070	1070	1070	1122	1122	1595	1435	1515	1515	1515
<b>C</b>	912	912	985	1265	1265	1265	1265	1265	1695	1695	1695	1695	1695
<b>Kg*</b>	75	80	235	245	245	260	295	310	435	465	495	535	605

\* Without motor

#### CRBIO Directly coupled



EL	15/1	25/1	35/2	45/2	46/2	55/2	65/2	66/2	75/3	85/3	86/3
<b>A</b>	950	950	950	950	1100	1800	1800	1800	1800	1800	1900
<b>B</b>	630	630	670	670	670	1035	1035	1155	1065	1185	1185
<b>C</b>	726	726	822	822	822	815	815	815	1410	1410	1410

#### GRBIO Pulley - belt transmission

Many configurations are available.

**ROBUSCHI®**

G E R M A N Y

Ahnser Strasse 5 - 31675 Bückeberg - Germany  
Tel. +49 5722 2856-0 - Fax +49 5722 2856-99  
E-mail: info.germany@roboschi.com - www.roboschi.de

**ROBUSCHI®**

D A N M A R K

Fuglebaekvej 3 A, 1 - 2770 Kastrup - Denmark  
Tel. +45 70257800 - Fax +45 70 257900  
E-mail: sales@roboschi.dk - www.roboschi.dk

**ROBUSCHI®**

F R A N C E

6, rue de la Grande Borne - 77990 Le Mesnil Amelot - France  
Tel. +33 1 60037569 - Fax +33 1 60037577  
E-mail: info.france@roboschi.com - www.roboschi.fr

**ROBUSCHI®**

B E N E L U X

Kanaaldijk 100 - 6956 AX Spankeren - Netherlands  
Tel. +31 313 41 5570 - Fax +31 313 41 5433  
E-mail: roboschi@roboschi-benelux.nl - www.roboschi-benelux.nl

**ROBUSCHI®**

U S A I n c.

3801 Beam Road, Suite F - Charlotte, NC 28217  
Tel: 704-424 1018 - Fax: 704-424 1019 - Toll free: 877-424-1020  
E-mail: sales@roboschiusa.com - www.roboschiusa.com

**ROBUSCHI®**

C H I N A

218 Tianmu Road West - Suit 1208, Building No. 2, Kerry Everbright City - 200070 Shanghai - China  
Tel. +86 21 6317 5461 / +86 21 6317 6461 - Fax +86 21 6317 7312  
E-mail: roboschichina@roboschichina.com - www.roboschichina.com

**ROBUSCHI®**

d o B R A S I L

Centro Administrativo Rio Negro - Conjuntos 25 e 26 - Edifício Jaçari - Alameda Rio Negro 585  
CEP 06454-000 - Alphaville/Barueri - SP - Brasil  
Tel +55 11 4191-2322 - Fax +55 11 4191-2277  
E-mail: roboschi@roboschi.com.br - www.roboschi.com.br

**ROBUSCHI®**

**ROBUSCHI s.p.A.**  
**Head office and factory**

Via S. Leonardo, 71/A - 43122 Parma - Italy  
Tel. +39 0521 274911/91 - Fax +39 0521 771242  
E-mail: info@roboschi.com - www.roboschi.com

**FILIALE DI MILANO**

Via Brodolini, 17 - 20032 Cormano (Milano) - Italy  
Tel. +39 02 51628065 - Fax +39 02 51620224  
E-mail: info@roboschi.com

**FILIALE DI PADOVA**

Piazza Zanellato,5 - 35129 Padova - Italy  
Tel. +39.049.8078260 - Fax +39.049.8078183  
E-mail: info@roboschi.com